

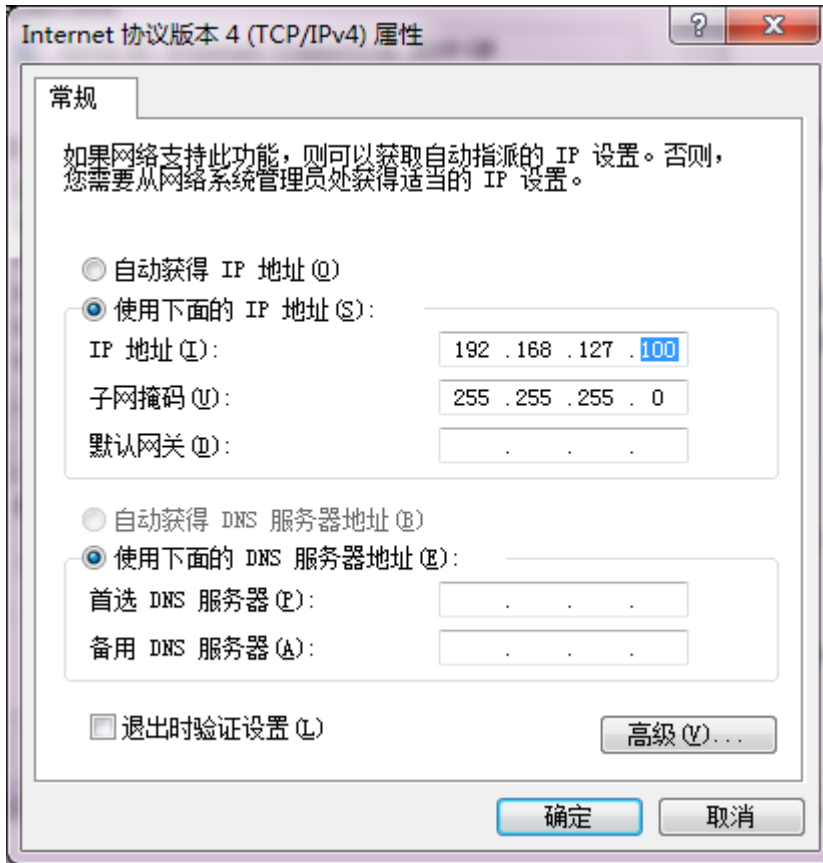
Turbo Ring 设置和测试

目录

一、准备.....	2
二、交换机设置.....	2
1、搜索交换机.....	2
2、登录交换机.....	3
3、设置 Turbo Ring	4
三、Turbo Ring 测试	6

一、准备

如果设备是新产品没有做过配置的话，先将 PC 的有线网卡 IP 地址修改成 192.168.127.xxx（因为交换机默认的网段是 192.168.127.0）



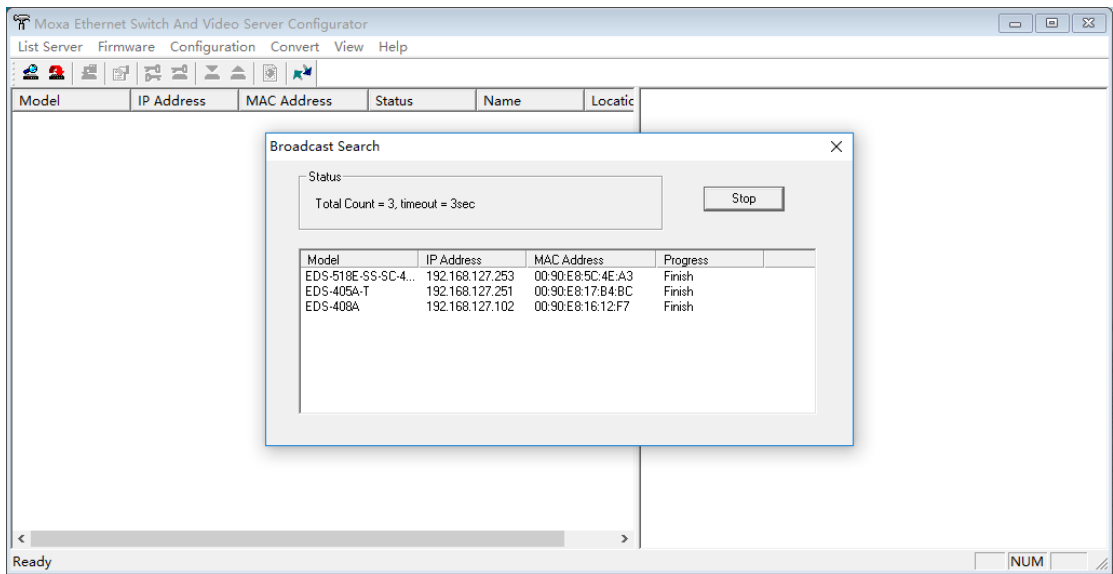
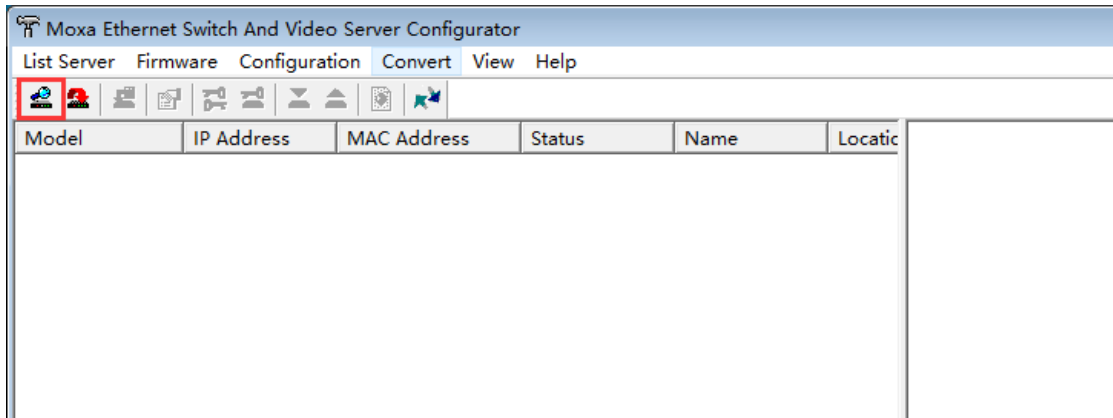
二、交换机设置

1、搜索交换机

将所有交换机级联并进行设置，**请不要将交换机练成环网。**
连接电脑的有线网口到交换机，并关闭电脑的无线网卡；并运行 edscfgui 软件，点击 Search。

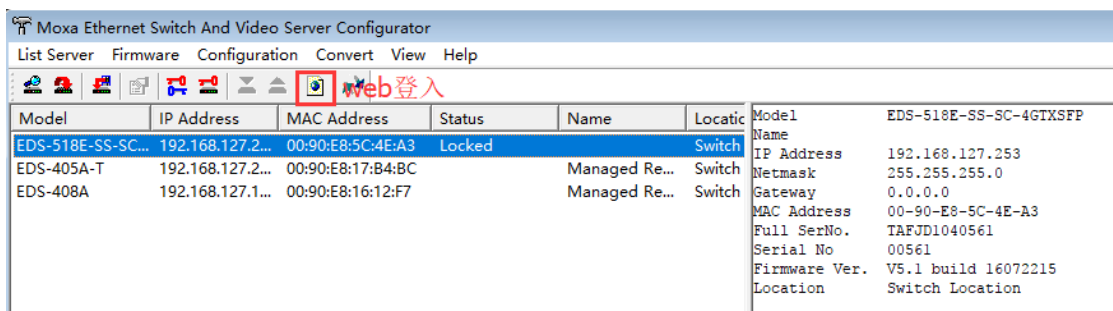
edscfgui 下载地址：

<https://www.moxa.com/drivers/EDS/utility/V5.3/edscfgui.exe>




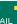



2、登录交换机

点击 edscfgui 软件中的 web 登入



或在 Web 浏览器中输入交换机的 IP 地址，用户名：admin，默认密码：空或 moxa

EDS-400A 系列默认密码为空

Model : EDS-408A	IP : 192.168.127.102	MAC Address : 00-90-E8-16-12-F7	PWR1 	PWR2 	FAULT 
Name : Managed Redundant Switch 04430	Serial No. : 04430	Firmware version : V3.6 build 15080711	MSTR/HEAD 	CPLR/TAIL 	
Location : Switch Location					

Account :

Password :

EDS-500E 系列默认密码为 moxa

MOXA®

Moxa Industrial Ethernet Switch
EDS-518E-SS-SC-4GTXSFP

Username :

Password :

goahead
WEB SERVER

3、设置 Turbo Ring

EDS-400A 系列点击 Communication Redundancy, 在 Redundancy Protocol 中选择 Turbo Ring V2 模式。

Communication Redundancy

Current Status
Now Active: RSTP (IEEE 802.1D 2004)

Ring 1	Ring 2
Status: --	Status: --
Master/Slave: --	Master/Slave: --
1st Ring Port Status: --	1st Ring Port Status: --
2nd Ring Port Status: --	2nd Ring Port Status: --
Coupling Mode: --	
Coupling Port status: Primary Port -- Backup Port --	

Settings

Redundancy Protocol: Turbo Ring V2

Enable Ring 1
 Set as Master
 Redundant Ports 1st Port: 4
 2nd Port: 5

Enable Ring 2
 Set as Master
 Redundant Ports 1st Port: 2
 2nd Port: 3

Enable Ring Coupling
 Coupling Mode: Dual Homing
 Primary Port: 1 Backup Port: 1

Activate

goahead
WEB SERVER
Best viewed with IE 7 above at resolution 1024 x 768

开启第一个环，并设置启用 Turbo Ring 的两个端口。点击 Activate 启用。

Enable Ring 1
 Set as Master
 Redundant Ports 1st Port: 4
 2nd Port: 5

Enable Ring 2
 Set as Master
 Redundant Ports 1st Port: 2
 2nd Port: 3

Enable Ring Coupling
 Coupling Mode: Dual Homing
 Primary Port: 1 Backup Port: 1

Activate

EDS-500E 系列点击 Redundancy Protocol，选择 Turbo Ring V2 模式。

Model : EDS-518E-SS-SC-4GTXSFP IP : 192.168.127.253 MAC Address : 00-90-E8-5C-4E-A3 STATE MSTR/HEAD
 Name : Serial No : TAFJD1040561 Firmware Version : V5.1 build 16072215 PWR1 CPLR/TAIL
 Location : Switch Location ABC-02-USB-T : Device Not Present PWR2 FAULT

Home
 ▶ System
 ▶ VLAN
 ▶ Port
 ▶ Redundant Protocol
 ▶ Multicast
 ▶ QoS
 ▶ Security
 ▶ DHCP
 ▶ SNMP
 ▶ Industrial Protocol
 ▶ Diagnostics
 ▶ Monitoring

Redundant Protocol

Protocol **Turbo Ring V2**

Status

Active Protocol None

	Role	Turbo Ring Status	1st Port Status	2nd Port Status
Ring 1	--	--	--	--
Ring 2	--	--	--	--

	Role	Primary Port Status	Backup Port Status
Ring Coupling	--	--	--

Settings

Ring 1 Ring 2
 Set as Master Set as Master

Redundant Ports 1st Port **G3** Redundant Ports 1st Port G1
 2nd Port **G4** 2nd Port G2

Ring Coupling Enable

Best viewed with IE 7 above at resolution 1024 x 768

开启第一个环，并设置启用 Turbo Ring 的两个端口。点击 Apply 启用。

Settings

Ring 1 Ring 2
 Set as Master Set as Master

Redundant Ports 1st Port **G3** Redundant Ports 1st Port G1
 2nd Port **G4** 2nd Port G2

Ring Coupling Enable

Coupling Mode Dual Homing

Primary Port 1
 Backup Port 2

Apply

三、Turbo Ring 测试

将所有交换机按设置的端口连接成环网，电脑连接任一台交换机的任一端口，打开 cmd。Ping 其他交换机的 IP 地址，可以 ping 通，证明环网设置成功。



```
管理员: C:\Windows\system32\cmd.exe
Microsoft Windows [版本 6.1.7601]
版权所有 (c) 2009 Microsoft Corporation。保留所有权利。

C:\Users\Ashley_Yao>ping 192.168.127.253

正在 Ping 192.168.127.253 具有 32 字节的数据:
来自 192.168.127.253 的回复: 字节=32 时间=1ms TTL=64
来自 192.168.127.253 的回复: 字节=32 时间<1ms TTL=64
来自 192.168.127.253 的回复: 字节=32 时间<1ms TTL=64
来自 192.168.127.253 的回复: 字节=32 时间<1ms TTL=64

192.168.127.253 的 Ping 统计信息:
    数据包: 已发送 = 4, 已接收 = 4, 丢失 = 0 (0% 丢失),
往返行程的估计时间(以毫秒为单位):
    最短 = 0ms, 最长 = 1ms, 平均 = 0ms

C:\Users\Ashley_Yao>
```

(完)